

## Kennel Plans Adaptable to Any Operation

### Ideas Illustrated at Right

#### The Office

The drawing on the right illustrates features kennel owners consider an important part of any operation. The office can be kept fairly simple with a desk, a simple work station for a computer and printer, chair and probably a filing cabinet. A sturdy table with a nonskid surface for dog examination, grooming or to display dogs for sale is important.

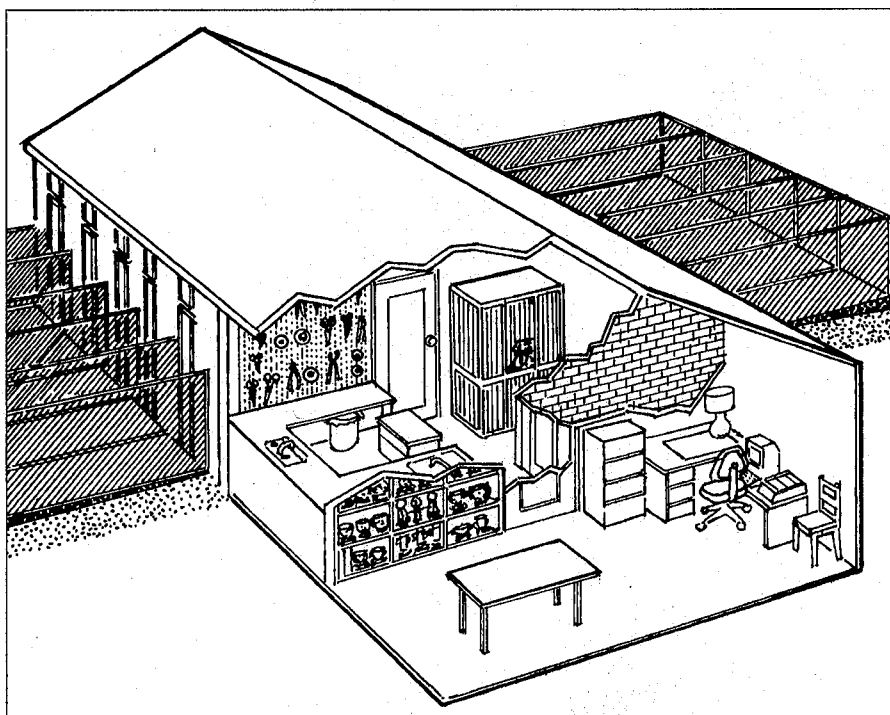
A trophy cabinet for exhibiting trophies and ribbons will add considerable color. Choose a highly visible location such as the one shown on the right - on the wall to the left of the door leading to the grooming room.

To help stay within your budget, you may wish to consider used furniture for the office.

#### The Grooming Room

For the grooming room, a bathtub for bathing large dogs may be secured through a salvage dealer. It should be set high enough to bathe dogs without bending over. Small dogs can be bathed in a regular size sink set in a work top. Tables with tile or a plastic laminate top are preferred for ease of cleaning. A rubber mat should be placed on any table top or surface where the dogs stand. Kitchen cabinets, available in many designs and prices, can serve as wall cabinets.

A pegboard panel is suggested for hanging grooming tools. Metal or heavy



plastic cans with lids are recommended for food storage. By mounting the cans on rollers, they can be moved to and from feeding areas and this also makes cleaning easier.

One kennel owner converted an old barber chair into a grooming table. The seat portion was removed and a grooming table complete with drawers was installed. The hydraulic lift is used to raise or lower the table as desired.

The drying cage shown at the right rear is easily constructed. Latticework front and sides allow for more air passage. During cold months,

heat lamps or air dryers can be used to speed drying. Care should be taken in the use of any type of dryer to prevent burns on the dog.

A lavatory for kennel personnel is located just beyond the trophy wall. The boiler and water heater are located on the outside of this room.

#### Additional Suggestions

For efficiency in cleaning and maintenance, concrete and concrete block

construction is preferred. Walls of concrete or concrete blocks with concrete floors and kennel runs make for

*Before selecting a location and constructing a new facility, we recommend that you check all zoning laws in your area, including city, county and state. In addition, learn about local building codes in your area.*

a durable and economical kennel structure. Dogs may chew on wood unless it is specially protected and this provides a hiding place for bacteria and parasites. Wood absorbs more urine and urine odors than concrete. Wet wood deteriorates rapidly.

The higher initial cost of a concrete and concrete block building is usually offset by lower maintenance costs, ease of cleaning and general appearance.

A sleeping pallet is essential to keep dogs from lying on the concrete floors which can be cold and damp during inclement weather. Fiberglass reinforced plastic pallets are easy to clean and sanitize. Wooden pallets can also be used. Waterproof 1/2-inch plywood is recommended so the pallets can withstand years of scrubbing and disinfecting.

Water, drainage, ventilating and heating systems should be carefully planned before starting construction to help control costs.

Electrical wiring, gas lines and plumbing may be installed in the walls or beneath the floor. However, placing these systems in the ceiling gives easier access for repairs and future remodeling.

For boarding kennels we recommend at least a 3-foot high solid wall between pens both inside and outside. This minimizes the possibility of transmitting diseases from one pen to another. Aggressive dogs find it difficult to fight while standing on their hind legs.

In areas where winter freezing occurs, an important point to remember in concrete block construction is to have footings that are poured to sub-frostline depths. This will protect against seasonal movement of the building and damage to the walls. The depth will vary, depending upon the area.

A roof overhang will provide shade for the kennel runs during hot weather. If this is not feasible, hard plastic or fiberglass panels can be placed over part of the run to provide shade. In heavy snowfall areas, they must be removed and stored to prevent damage. Perforated plastic shade covers can also be used. They are easier to store than solid panels.

Epoxy paint seals the wall surface for easy cleaning which aids in kennel sanitation.

Ventilation requirements depend upon local climate and zoning regulations.

For insulation requirements, consult your local building commissioner.

Ceiling-hung gas or electric space heaters can be used in winter and roof-mounted ventilating fans used during the summer.

### About the Plans

While this plan shows ten runs, the number can be increased or decreased in units of two.

The runs are four feet wide. Six-foot wide runs are recommended for large dogs and boarding kennels.

Wide runs also take advantage of the tendency of dogs to deposit droppings at the lower end of the wider runs. Thus it is easier to hose down the droppings into sewage or drainage gutters.

Galvanized or aluminum 9-gauge chain-link fencing provides one of the most attractive, long-lasting and relative non-climbable enclosures for a kennel facility. Several companies offer pre-stretched panels which they will build to your specifications.

Six foot high fencing is an adequate height to prevent almost any dog from escaping.

A 36-inch buffer zone of crushed limestone surrounding kennel runs is recommended to minimize the growth of vegetation to help prevent insects and rodents from nesting close to the kennel.

Although it adds to the initial cost, a double-fence structure with the gravel buffer zone between the perimeter and kennel run fences provides more security for the kennel.

This basic plan is flexible for your personal modifications. In some instances, equipment and materials are referred to by trade names. This is not a recommendation, but is done only to give you a guide for investigating types which may be

suitable for your purpose.

A bill of material is furnished to enable you and your contractor to determine the exact costs in your locality. Estimates of building costs should be determined before plans are finalized and commitments made. Modifications of the design or size of the kennel may be needed to stay within budget. Allowing at least 10 percent for unanticipated changes or additions is recommended.

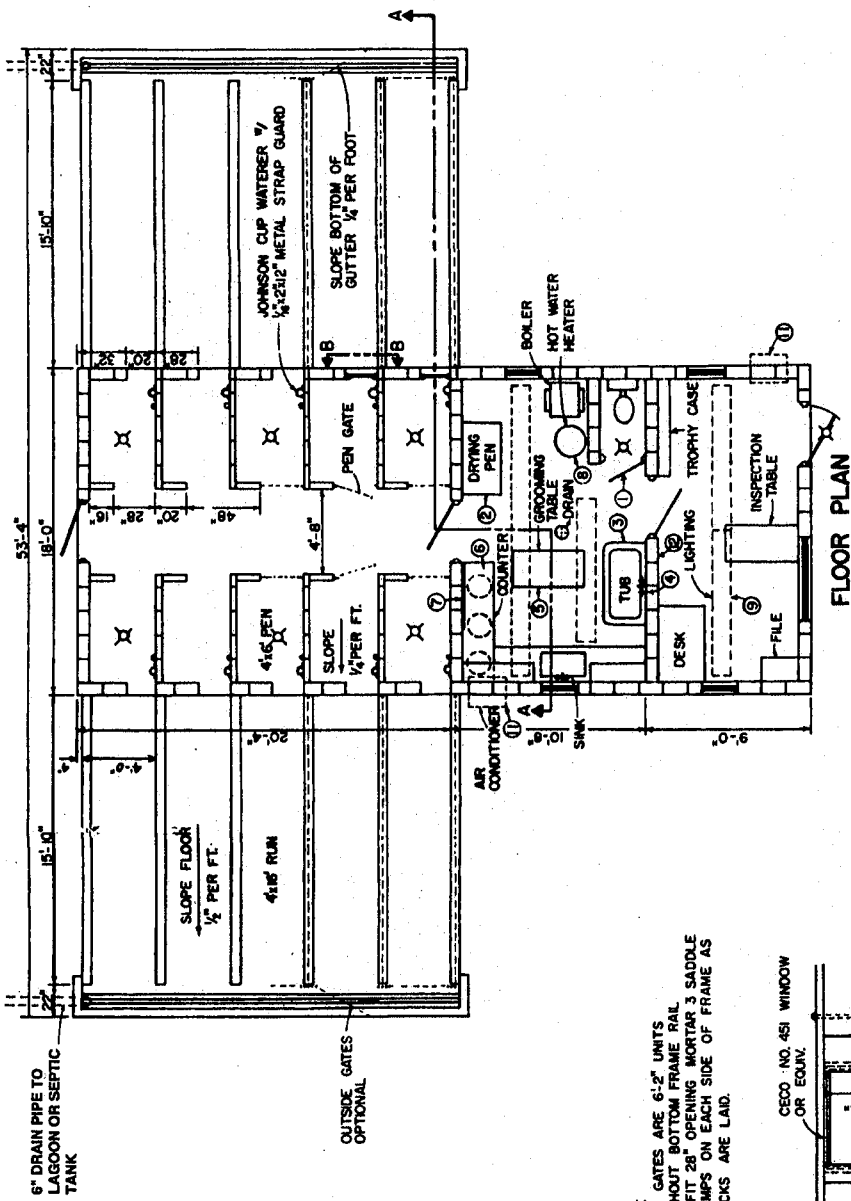
### Safety Considerations

Fire prevention in a kennel is critical. Install smoke detectors throughout the kennel. Fire extinguishers should be available and easily removed from the walls.

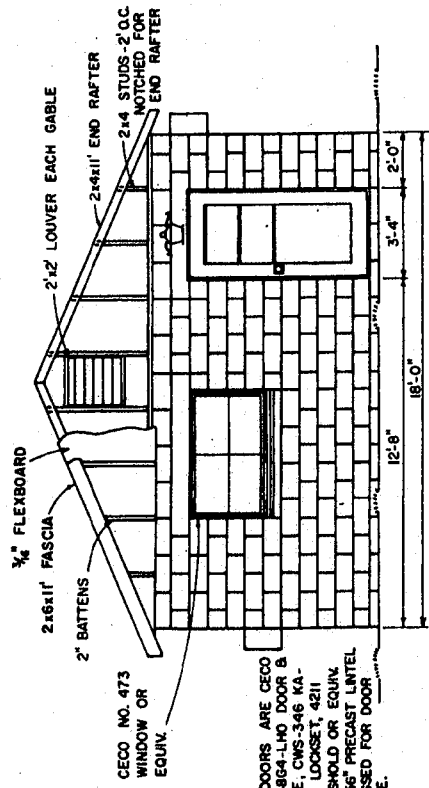
Install electrical wiring and outlets well away from dogs to avoid the danger of dogs chewing on cords and to prevent contact with water. If outlets must be installed elsewhere, they should be encased in metal outlets with rain-tight covers. Check the local electric code for ground fault and other requirements.

Concrete runs should have the necessary traction so dogs will not slip or slide when the surface is wet. When the concrete is laid, use a light broom finish to score the surface and provide secure footing. This must be done with care. If the surface is too rough, it can cause irritation or even cut the pads on a dog's feet. A concrete sealer should be used.

**NOTE:** *The usefulness and strength of this building are dependent upon the materials used and the quality of the workmanship. Since Nestlé Purina PetCare Company does not provide material or labor, it can assume no responsibility for the construction. Statements or descriptions contained herein are informational only and are not made or given as a warranty of the item to be constructed in any way, including any implied warranty of fitness for any particular purpose. ALL WARRANTIES ARE HEREBY EXPRESSLY DISCLAIMED. Consult an architect or your municipal government for local code requirements.*



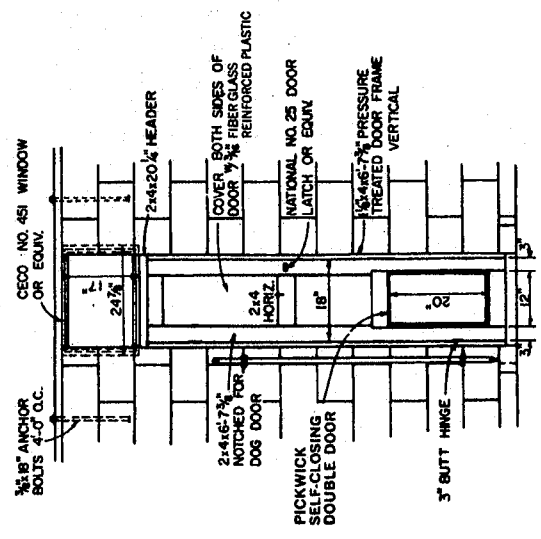
1	LAVATORY DOOR IS CECO F-2068M OR EQUIV
2	DRYING OR WHELPING PEN
3	BATH TUB 4'-6" LONG X 2'-6" WIDE W/TOP 36" ABOVE FLOOR
4	FAUCETS ARE 48" ABOVE FLOOR
5	GROOMING TABLE W/DRAWERS
6	30" COUNTER, 36" HIGH W/FEED CANS BELOW
7	2"x4" PEG BOARD FOR GROOMING TOOLS
8	30 GAL. HOT WATER HEATER
9	FLUORESCENT LIGHT FIXTURES, 4-40 WATT, RAPID START LAMPS PER 8 UNIT
10	30" WIDE SINK COUNTER 36" HIGH
11	26"x15-5/8" OPENING FOR G.E. R142 & R162 AIR CONDITIONERS OR EQUIV AS OPTION PARTITION AT SIDE OF TUB IS 6' HIGH
12	



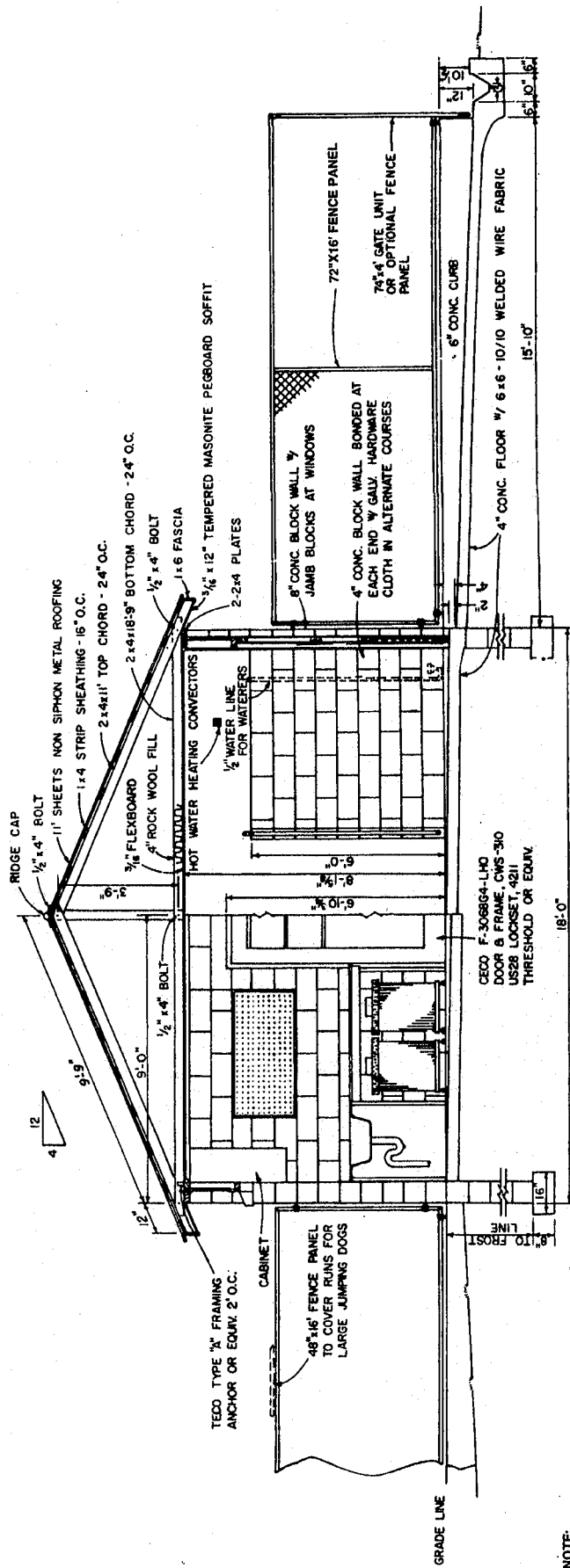
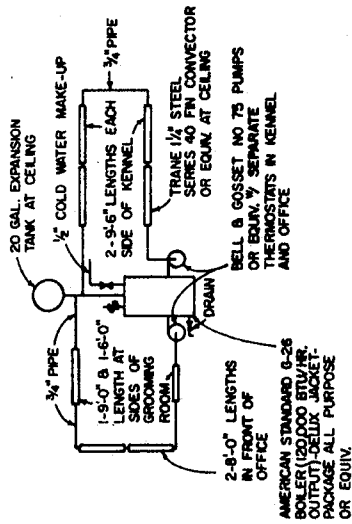
END VIEW OF OFFICE

Note:  
 END DOORS ARE CECO F-3086A-LHO DOOR & FRAME, CWS-346 KA-US28 LOCKSET, 4211 THRESHOLD OR EQUIV. 818156" PRECAST LINTEL RECESSED FOR DOOR FRAME.

Note:  
 PEN GATES ARE 6'-2" UNITS WITHOUT BOTTOM FRAME RAIL TO FIT 28" OPENING MORTAR 3 SADDLE CLAMPS ON EACH SIDE OF FRAME AS BLOCKS ARE LAID.



SECTION B-B



**SECTION A-A**

NOTE:  
FOR LARGE DOGS USE  
6 FT. WIDE PENS & RUNS

# Bill of Materials

## TREATED MATERIAL

Pressure Treated to AWPA Specifications.

10	2x4x14'	20-1 1/4x4x6'7 7/8" Door Facers
10	2x4x14'	20-2x4x6'7 7/8" Door Verticals
1	2x4x10'	10-2x4x1'0" Door Horizontals

## UNTREATED LUMBER

Constr. Gr. Douglas Fir or Equiv.

18	2x4x22'	36-2x4x11' Top Chords
18	2x4x20'	18-2x4x18'9" Bottom Chords
6	2x4x12'	18-2x4x4' Truss Verticals
12	2x4x20'	Plates
5	2x4x10'	Door Horizontals & Headers
4	2x4x8'	Window Verticals & Horizontals
1	2x4x8'	Louver Horizontals
36	1x4x20'	Strip Sheathing
2	1x6x12'	Louvers
4	1x6x20'	Eave Fascia
2	2x6x22'	End Fascia
8	2x4x12'	Studs
4	1x2x20'	Battens
74'	1 1/8"	Wood or Plastic Molding Trim at Ceiling

## ROOFING & SIDING

28 Ga. Corr. Galv. Steel or Equiv.

Coverage

24"	30"	
40	32	11' Sheets Roofing
4		10' Lengths Ridge Roll

160 sq. ft. Vinyl Siding

## BUILDING BOARDS

17	3/16"x4'x8'	Fiberglass Reinforced Plastic Ceiling and Doors
----	-------------	---

## INSULATION

720 l.f. Insulation Barrier

## ROLL MATERIAL

1085 l.f.	6x6-10/10	Welded Wire Fabric—Floor
275 l.f.		Mortar Joint Reinforcing—Pen Walls

## MILL WORK MATERIALS

14	Ceco No. 451—	Windows
1	Ceco No. 473—	Window in Office
1	Ceco F-206 8M	Door—Lavatory
4	Ceco F-306 8G4-LHO	Door & Frame—Doors
2	Ceco CWS-346 KAUS28	Lockset—End Doors
4	Ceco 4211	Threshold—Doors
2	Ceco CWS-310 VS28	Lockset—Inside Doors
10	Pickwick Spring-loaded	self-closing double doors

## CONCRETE & BLOCKS

26	Cu. Yd. Concrete—	Floor, Runs, Gutters, Curbs, Footing
3170	8"x8"x16"	Concrete Block—Outer Walls & Office Walls
200	8"x8"x16"	Corner Blocks—45-Door Openings, 17-Window Openings, 70-Dog Door Openings, 4-Air Conditioner Openings, 64-Building Corners
70	8"x8"x16"	Double Corner Blocks—Dog Door Openings
136	8"x8"x8"	Half Corner Blocks—45-Door Openings, 17-Window Openings, 70-Dog Door Openings, 4-Air Conditioner Openings

252	8"x4"x16"	Blocks—Pens
126	8"x4"x16"	Corner Blocks—Pens
36	8"x4"x8"	Half Blocks—Pens
36	8"x4"x8"	Half Corner Blocks—Pens
10	8"x8"x8"	Half Jamb Blocks—Dog Door Windows
10	8"x8"x16"	Jamb Blocks—Dog Door Windows
4	8"x8"x56"	Precast Lintel—Door Frame
1	8"x8"x72"	Precast Lintel—Large Window
1	5"x7"x56"	Precast Sill—Large Window
4	5"x7"x24"	Precast Sill—Office Windows

## HARDWARE

18	Teco "A"	Framing Anchor—Truss Braces
72	1/2"x4"	Bolts—Trusses
72	1/2"	Washers—Trusses
30	3/8"x18"	Anchor Bolts—Plates to Bricks
30	3/8"	Washers—Plates to Bricks
31#	20HRS	Nails—Fascia, Strip Sheathing, Stud, Louvers
5#	16HRS	Nails—Doors
10#	1 1/2"	Galv. Lead Head Roofing Nails
8#	1 1/2"	Galv. Nails Flexboard
20	3"	Butt Hinges—Dog Doors
10	National No. 25	Door Latches—Dog Doors
10	1/16"x2"x12"	Metal Strap—Waterer Guard
1	8"	Diameter Drain Cover—Feed Room

## EQUIPMENT

12	72"x16"	Fence Panel With Clamps—Pens
10	74"x4'	Gate Units With Clamps—Outer Pen Gates— or Fence Panels
10	74"x28"	Gate Units With Clamps—Inner Pen Gates
10	Johnson Cup	Waterer—Waterer
2	G.E. R142, R162	Air Conditioners—Office
1	Drying Pen—	Feed Room
1	4'6"x2'6"	Bath Tub—Feed Room
1	Grooming Table—	Feed Room
1	Counter 30" High—	Feed Room
3	18" Diam.	Feed Cans—Feed Room
1	2'x4'	Pegboard—Feed Room
1	Sink With Counter—	Feed Room
1	Trophy Case—	Office

## PLUMBING & HEATING

1	20 Gal.	Expansion Tank
1	30 Gal.	Water Heater
1	American Standard G-26	Boiler
2	Belt & Gossett No. 75	Pumps
1	3/4"	Stop & Waste Valve
2	1/2"	Hose Faucets
2	1/2"	Swing Spout Sink Faucets, 1 With Pull Rinse Spray
105'	3/4"	Galv. Steel Pipe
200'	1/2"	Galv. Steel Pipe
3	3/4"	90 Degree Elbows
2	3/4"	Tees
1	3/4"	Connector
2	3/4"x1/2"	Reducer
33	1/2"	90 Degree Elbows
16	1/2"	Tees
4	9'-6"	Trane 1 1/4" Steel Series 40 Fin Convectors
1	9'-0"	Trane 1 1/4" Steel Series 40 Fin Convectors
2	8'-0"	Trane 1 1/4" Steel Series 40 Fin Convectors
1	6'-0"	Trane 1 1/4" Steel Series 40 Fin Convectors

**ELECTRICAL**

- |   |   |      |  |
|---|---|------|--|
| 1 | 8 Circuit Service Box*                                      | 4    | Single Service Switches  |
| 7 | 40 Watt Fluorescent Lights—Pens, Lavatory                   | 8    | Convenience Outlets  |
| 5 | 8' Fluorescent Units (4-40 Watt Per Unit)—Office, Feed Room | 250' | No. 12 2-Wire Cable—Lights, Outlets                            |
| 1 | 40 Watt Weatherproof Light—Outside Light                    | 35'  | No. 12 3-Wire Cable—Pen Lights                                 |
| 2 | 3-Way Service Switches                                      |      | Miscellaneous Screws, Clamps, Etc., Needed for Electrical Work |

(Follow manufacturers' instructions for installation of air-conditioners and hot water heater.)

\*The number of circuits may vary depending upon the size of the kennel operation.

Additional 220 outlets might be considered.

## Cost Summary

Treated Material
Untreated Lumber
Roofing and Siding
Building Boards
Insulation
Roll Material
Mill Work Materials
Concrete & Blocks
Hardware
Equipment
Plumbing
Electrical
Total Materials
Labor
Total